

## Terminology

### TB Export Creation In SDL MultiTerm 2007

Last update: March 2010

Version	Author	Description of Version	Date
0.1	Marion Mordenti	First version	MAR-2010

## Table of Contents

Termbase (TB) Export Creation in SDL MultiTerm 2007 .....	3
Create an export of an existing Termbase (TB) .....	3

## Termbase (TB) Export Creation in SDL MultiTerm 2007

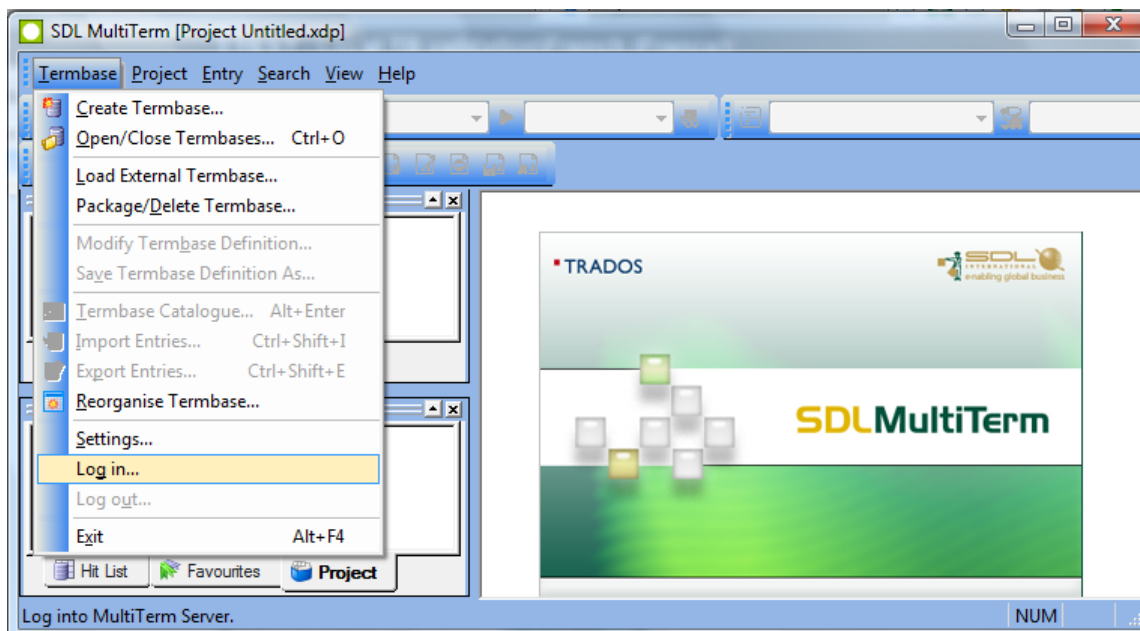
If you have been granted access to an existing Termbase (TB) on SDL MultiTerm server, you will be able to create an XML export of an existing TB and provide it to your suppliers in order for them to perform local termbase lookup when performing translation work.

This document highlights the step-by-step procedure to perform this task.

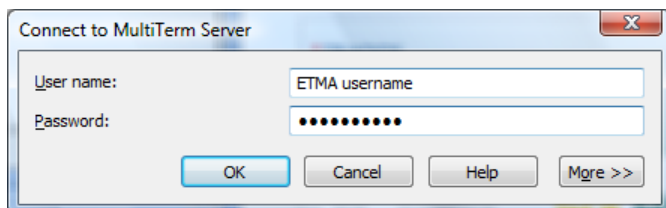
### Create an export of an existing Termbase (TB)

In order to create an export of an existing Termbase (TB) on MultiTerm server, you will need to have SDL MultiTerm 2007 installed on your machine:

1. Open SDL MultiTerm 2007, and select **Termbase > Log in...** to access the remote existing termbase you wish to create an export from.



2. Enter your *ETMA* user name and password, and click the **OK** button.

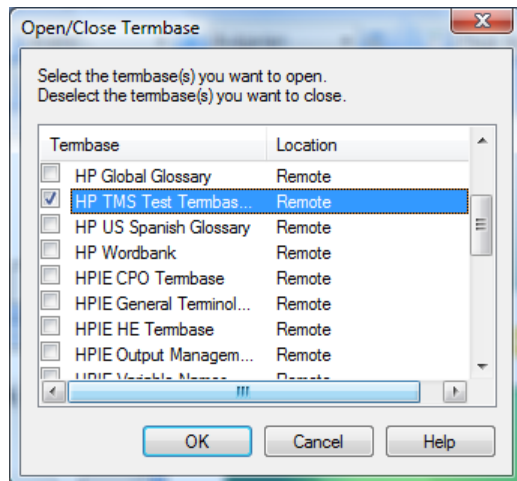


- User name: *use ETMA user name*
- Password: *use ETMA password*
- MultiTerm Server URL:  
*<http://hpetma-gvw1483.houston.hp.com/mtanywhere>*

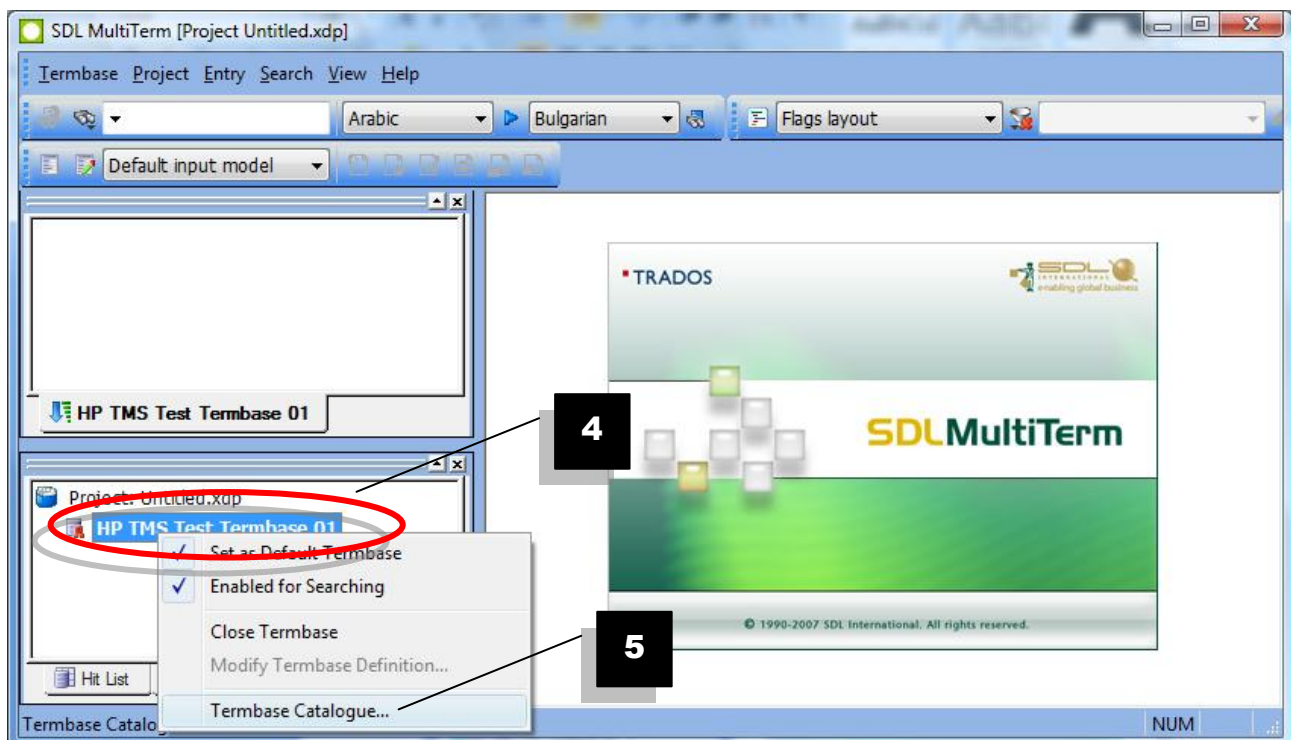


**NOTE:** You will need a BPIA (non-HP) or a Digital Badge (HP) to get access to this server. You will also need to ensure that you have been granted proper access rights on the termbase to perform the export.

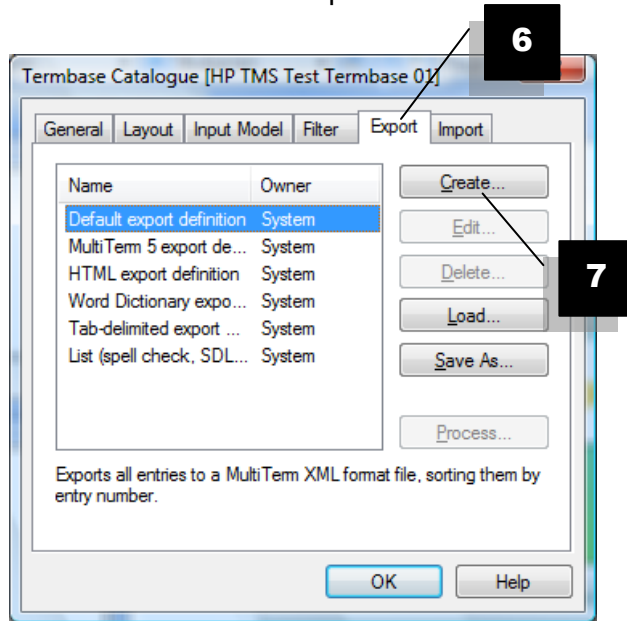
3. In SDL MultiTerm 2007, select **Termbase > Open/Close Termbase...**, then select the Termbase you wish to create an export for, from the list provided in the **Open/Close Termbase** pop-up screen, and click **OK**.



4. The selected Termbase is now available under your Project Tab.
5. Right click on this TB name and select **Termbase Catalogue...**



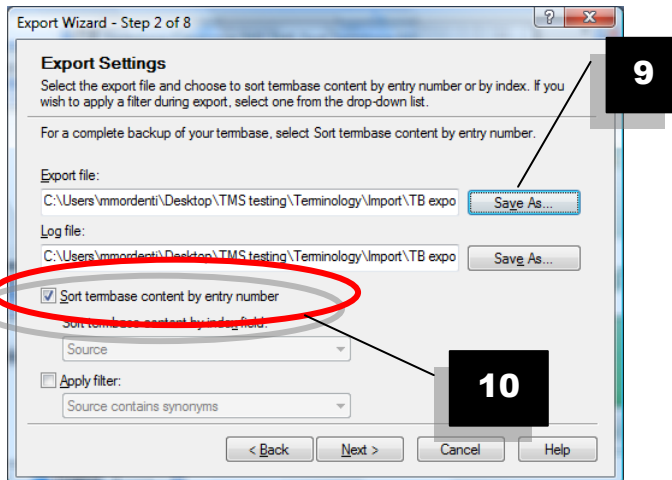
6. On the **Termbase Catalogue** pop-up, select the **Export** tab.
7. Select “Default export definition” and click the Create button.



8. Follow the **Export** wizard, enter a name for the export definition, and click **Next**.



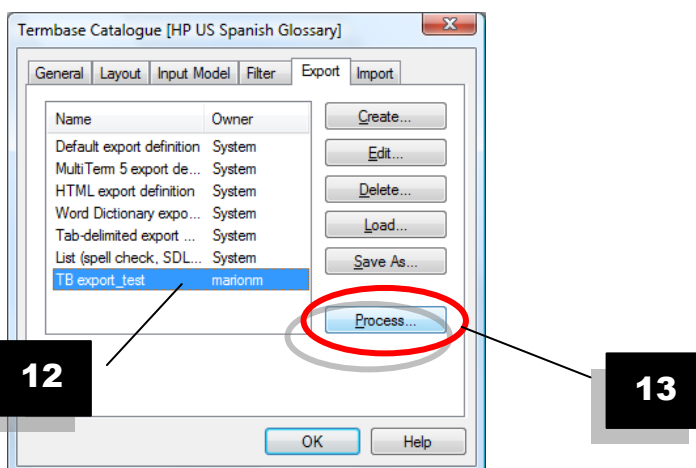
9. On the **Export Settings** pop-up, select on your disk the name for the XML file export as well as a location.
10. Ensure to select the option “Sort termbase content by entry number” checkbox, and click **Next**.



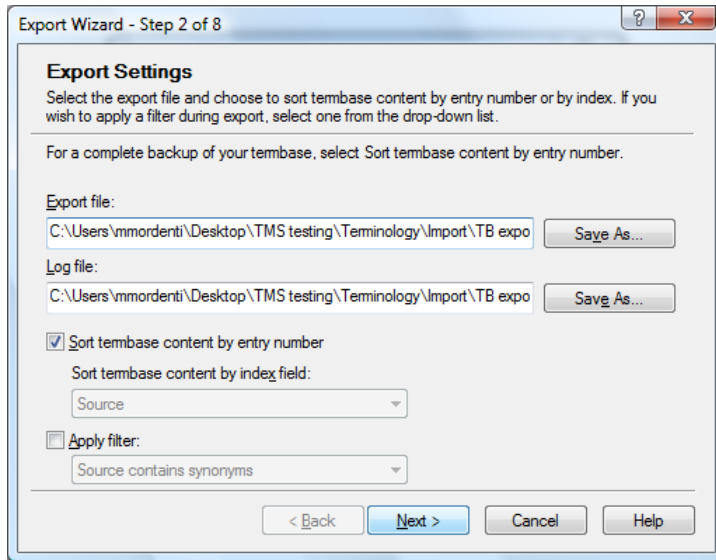
11. Select the **Complete export** radio button, and click **Next**.



12. Select the newly generated export in the list below.  
13. Click on the **Process** button.



14. Verify that all information is correctly pre-filled and click on Next.



15. Following the processing of the export, click the Finish button. The XML file export is now available on your disk, at the location you specified in the Export wizard.