

# **MultiTerm Desktop**

**Install SDL MultiTerm 2011  
For Administrators**



Version	Author	Description of Version	Date
0.1	Marion Mordenti	First version	MAR-2013

## Table of Contents

Overview and Pre-requisites .....	3
Download SDL MultiTerm 2007 software .....	3
Install SDL MultiTerm 2011 Desktop .....	3
Configure SDL MultiTerm 2011 Desktop .....	6

## Overview and Pre-requisites

You have been asked to install SDL MultiTerm 2011 for Administrators in order to access and manage termbase(s) on ETMA.

This document provides you the step-by-step procedure to perform this task.



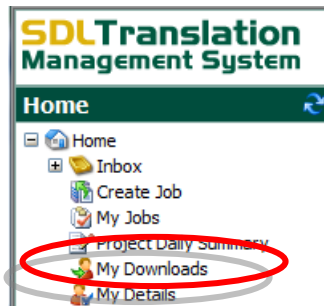
**NOTE:** In order to download the SDL MultiTerm installation package, you will need an access to ETMA. If you do not yet have an account on ETMA, please contact the ETMA Service Desk:

- By email: [etmaservicedesk@hp.com](mailto:etmaservicedesk@hp.com)
- By logging a support case on ETMA SharePoint: [https://external1.collaboration.hp.com/external/TL\\_Vendor\\_Access/ETMA%20subpages/Support.aspx](https://external1.collaboration.hp.com/external/TL_Vendor_Access/ETMA%20subpages/Support.aspx)

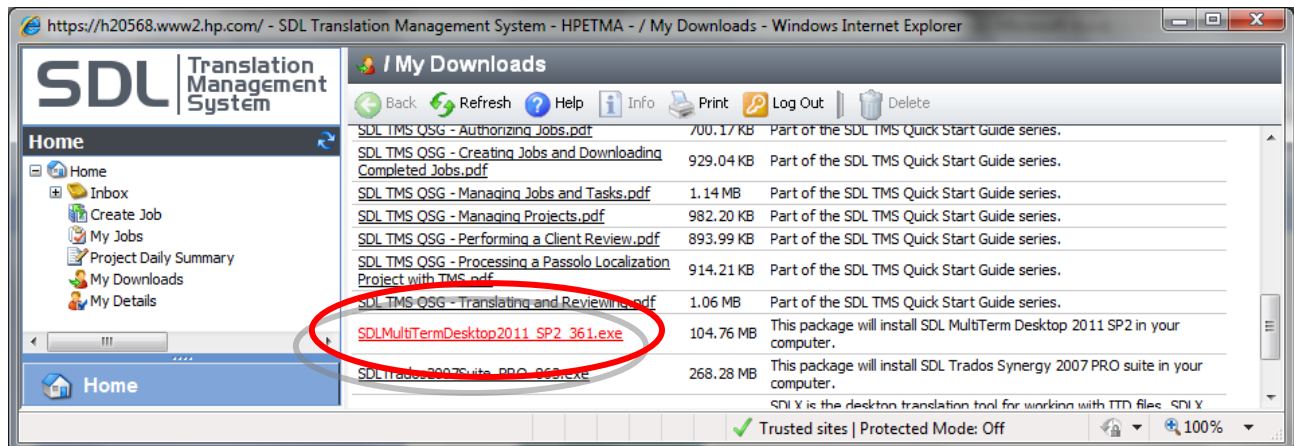
## Download SDL MultiTerm 2011 software

The SDL MultiTerm 2011 installation package is available for you to download on ETMA:

1. Go to <http://www.hp.com/etma>, and enter your ETMA username and password
2. On the **Home** tab, click **My Downloads** menu on the navigation bar.



3. Under **System Downloads**, select “SDLMultiTermDesktop2011\_SP2\_361.exe” and save this file to your disk.

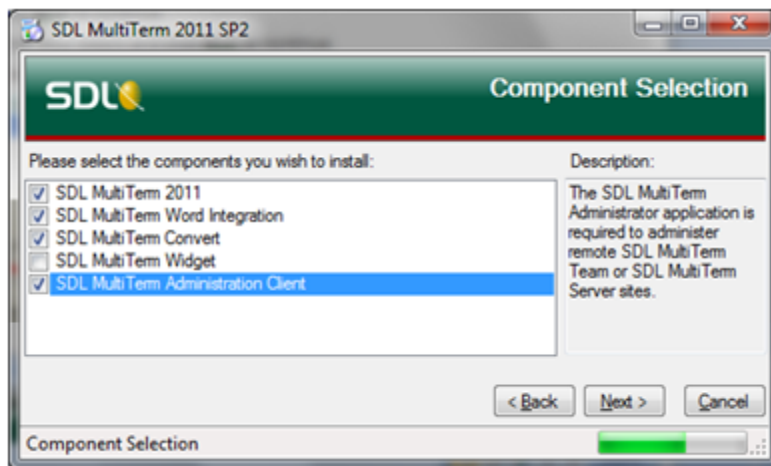


# Install SDL MultiTerm 2011 Desktop

The installation routine for MultiTerm Desktop is based on an installation wizard that guides you through the setup process.

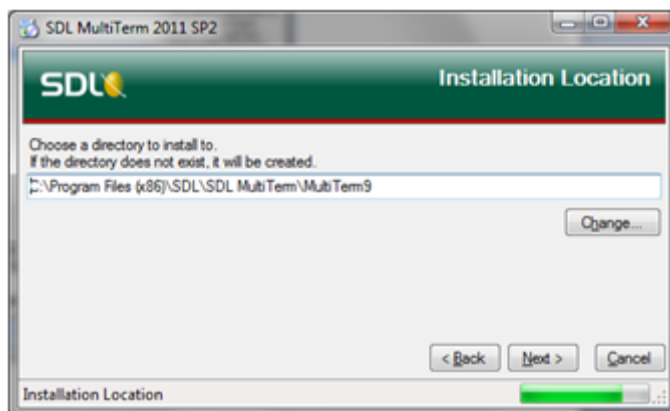
To install MultiTerm Desktop:

1. Double-click on the downloaded .exe file and click **Run**. This will start the installation wizard.
2. **Accept**: This is the first page in the MultiTerm Desktop installation wizard. Click **Accept** to continue.
3. **License Agreement**: Read through the contents of the license agreement and select to accept the terms of the agreement. Click **Next** to continue.
4. **Component Selection**: This page lists the individual features that are available for installation on MultiTerm Desktop. Deselect any features that you wish to exclude from your installation.

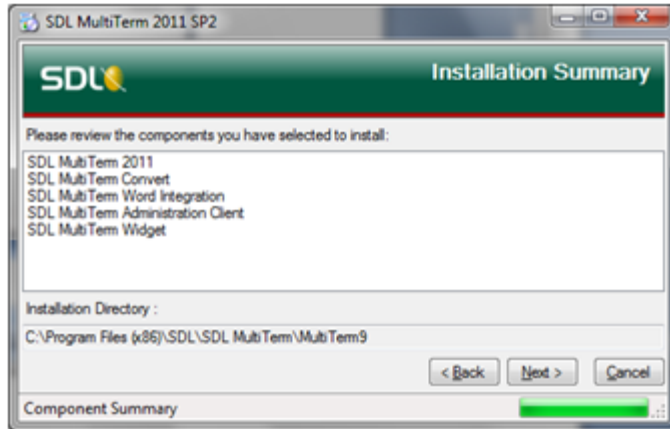


NOTE: Mandatory elements are: **SDL MultiTerm 2011**, **SDL MultiTerm Convert**, and **SDL MultiTerm Administration Client**.

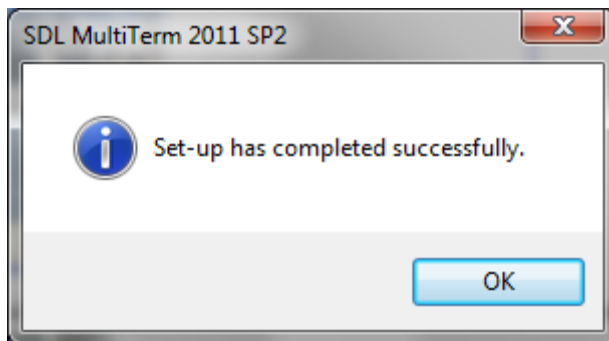
5. **Installation Location**: This page allows you to confirm where SDL MultiTerm Desktop application will be installed on your disk.



6. **Installation Summary**: Recaps all setup information prior to launching the installation. Click on **Next** to proceed.



7. **Install Wizard Completed:** The following pop-up is displayed when installation is completed and successful. Click **OK** to close the installation wizard.

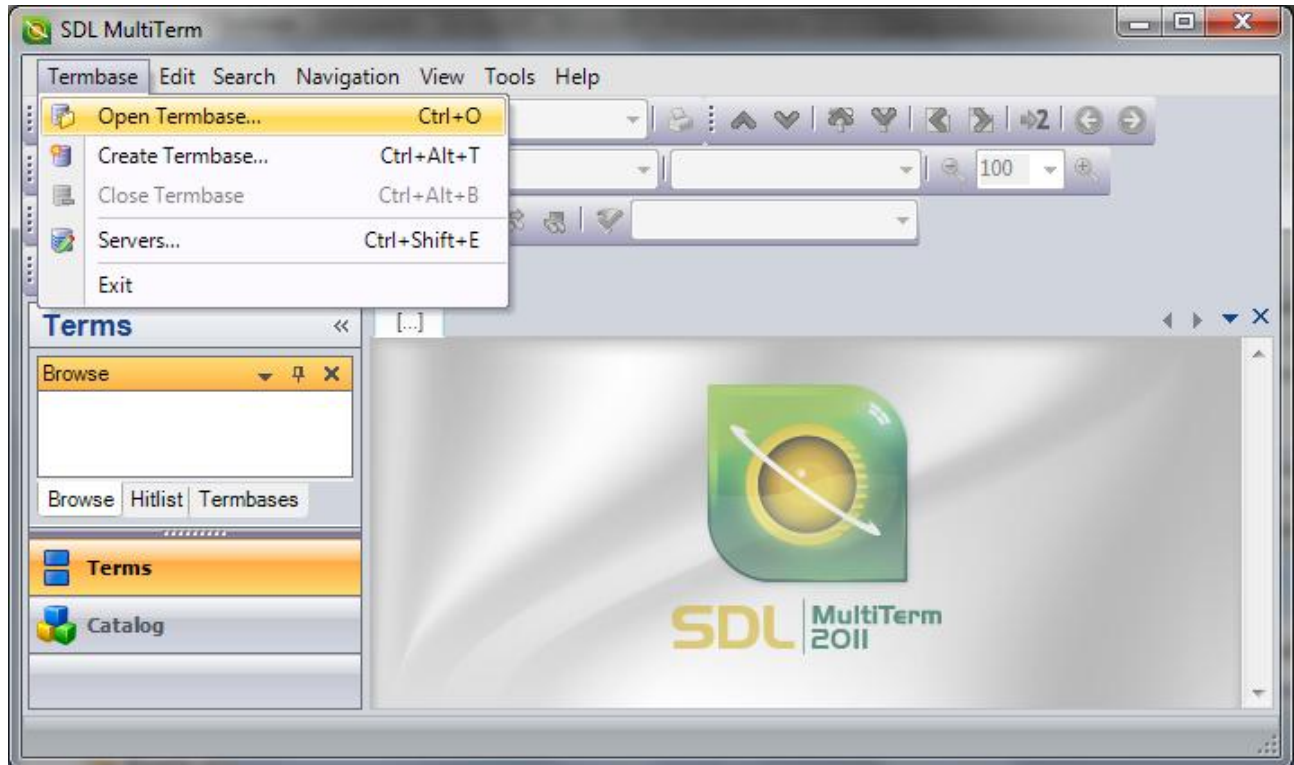


SDL MultiTerm 2011 is now added to the **Start** menu on your desktop (**Start > Programs > SDL > SDL MultiTerm 2011**).

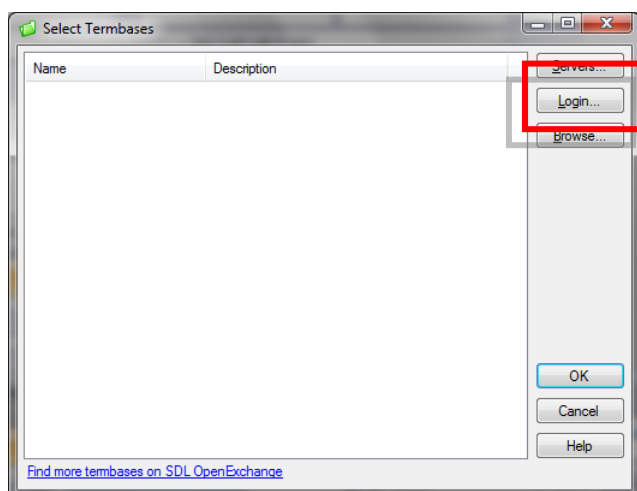
## Configure SDL MultiTerm 2011 Desktop

In order to start using SDL MultiTerm 2011 desktop to access and manage ETMA termbase(s), you will need to configure this application.

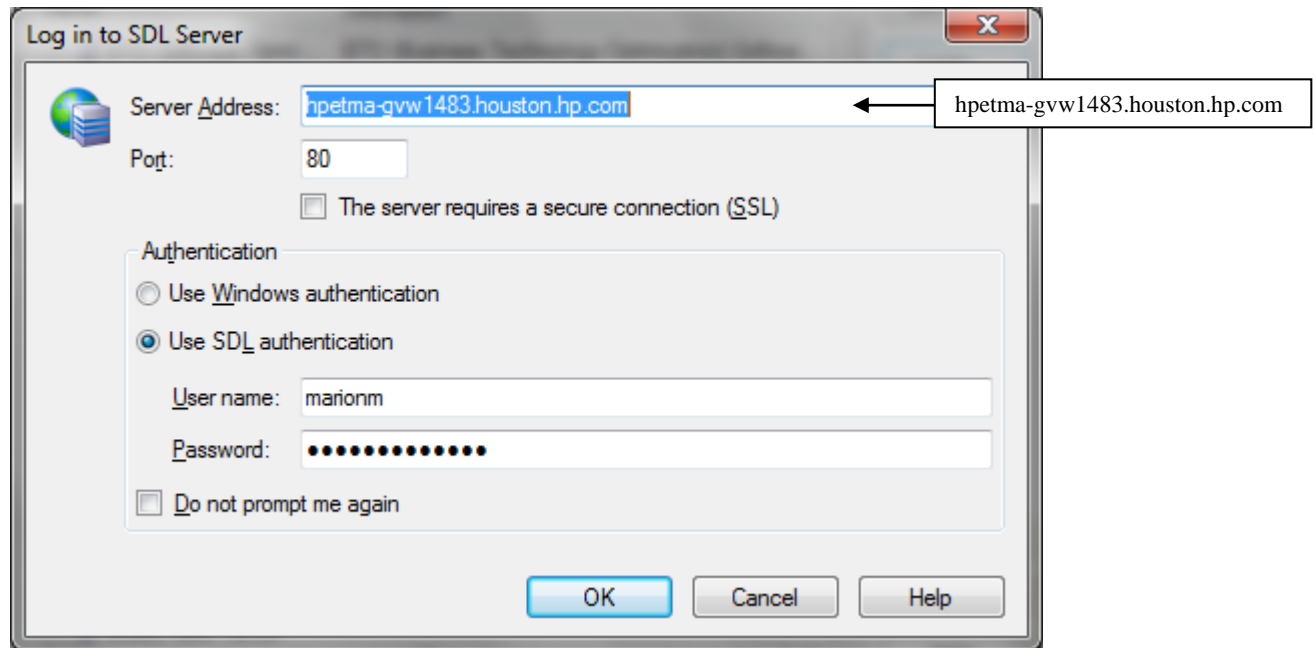
1. Start **SDL MultiTerm 2011 Desktop**, and go to **Termbase > Open Termbase**



2. On the **Select Termbases** pop-up click on the **Login** button on the right hand side.



3. In Server Address field, enter MultiTerm server URL: **hpetma-gvw1483.houston.hp.**
4. Make sure to select radio button "Use SDL authentication"
5. Enter your MultiTerm User name and Password



6. You will now have a list of all the termbases that you have access to, available on the **Select Termbase** pop-up. Tick the termbase(s) that you want to open and click **OK**

