

MultiTerm Desktop

**Create a Local Term Base
& Perform Term Recognition**



Version	Author	Description of Version	Date
2.0	Marion Mordenti	Updates to include MultiTerm 2011 migration	MAR-2013
1.0	Marion Mordenti	First version	NOV-2012

Table of Contents

Local Term Base Creation	3
Create a Local TB on SDL MultiTerm 2011 Desktop	3
Import New or Updated Content to existing TB	6
Local Term Base Lookup	9
Perform Term Recognition with a Local TB	9

Local Term Base Creation

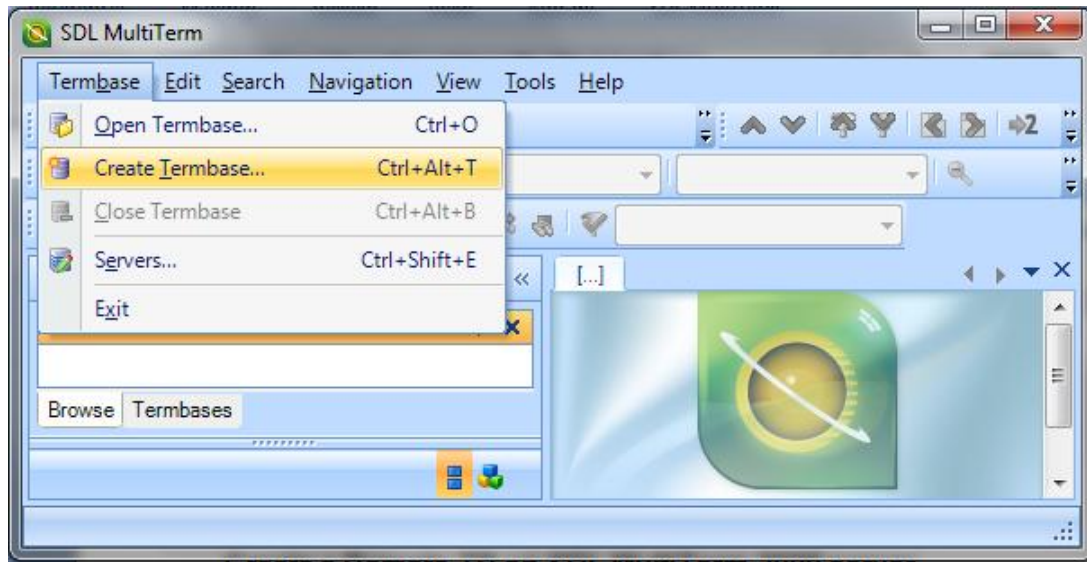
To create a local Termbase (TB) on your machine for a specific HP program and be able to perform TB lookup, you will need the following elements:

1. An XML extract of the MultiTerm termbase (.xml file)
2. A program Termbase Definition file (.xdt)

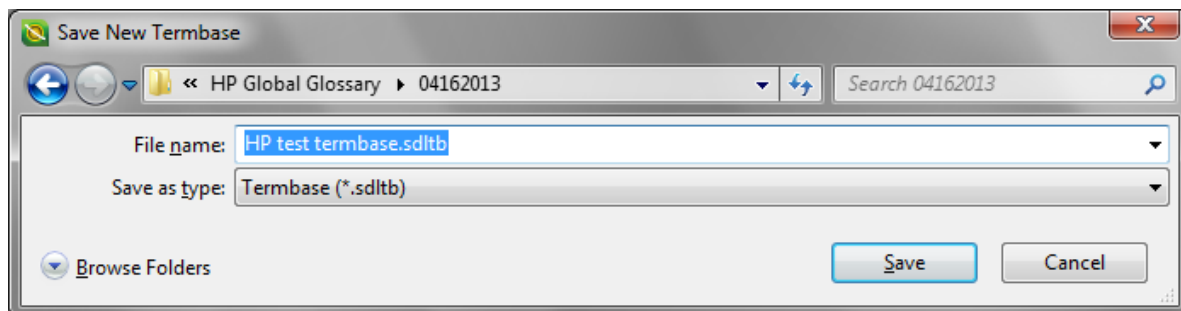
Create a Local TB on SDL MultiTerm 2011 Desktop

In order to create a local TB, you will need to have SDL MultiTerm 2011 installed on your machine:

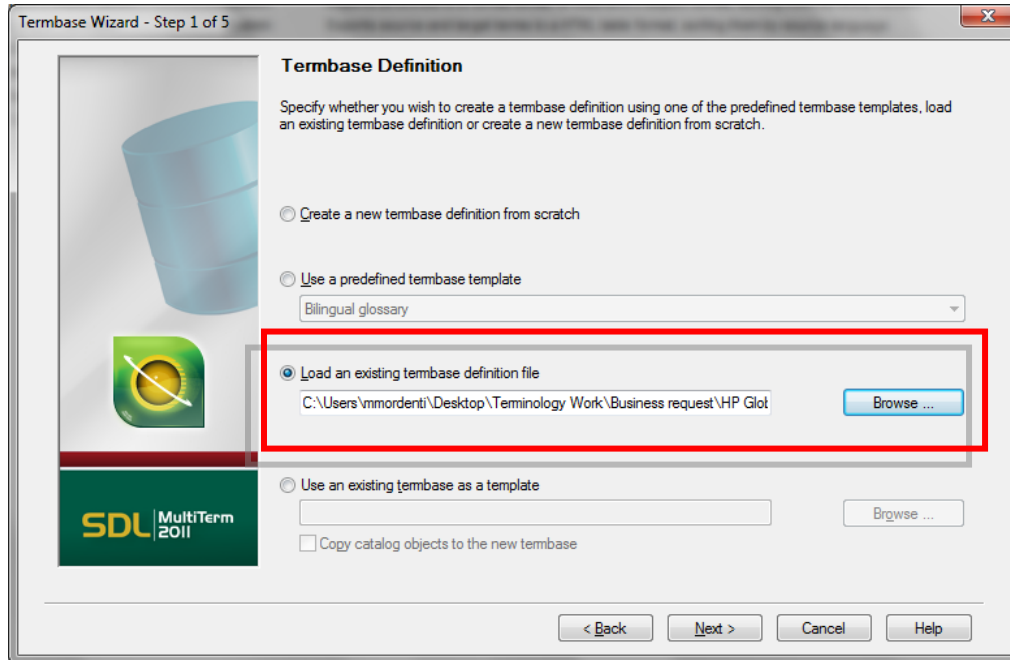
1. Open SDL MultiTerm 2011 Desktop, and select **Termbase > Create Termbase...**



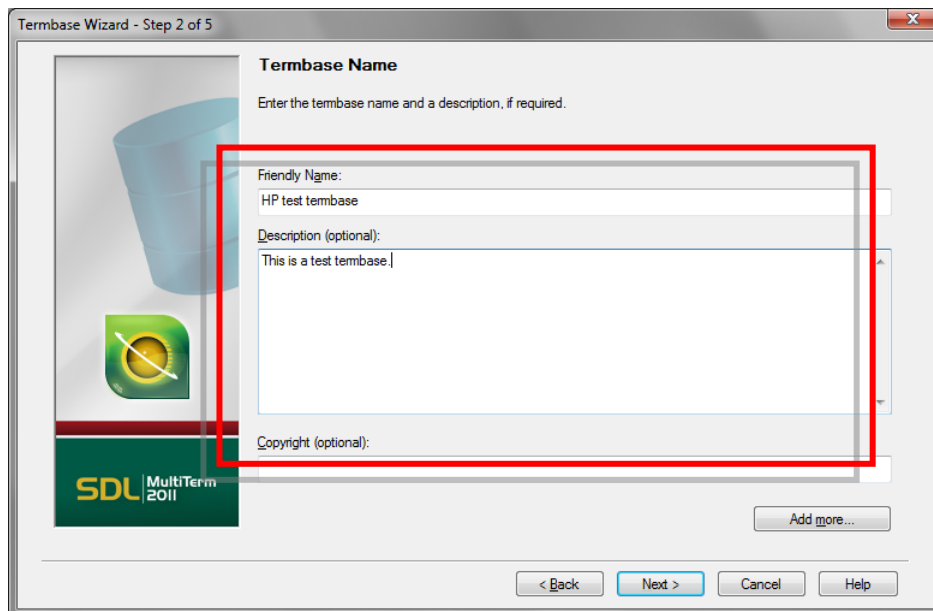
2. Select a location on your disk for this new TB and follow the wizard:



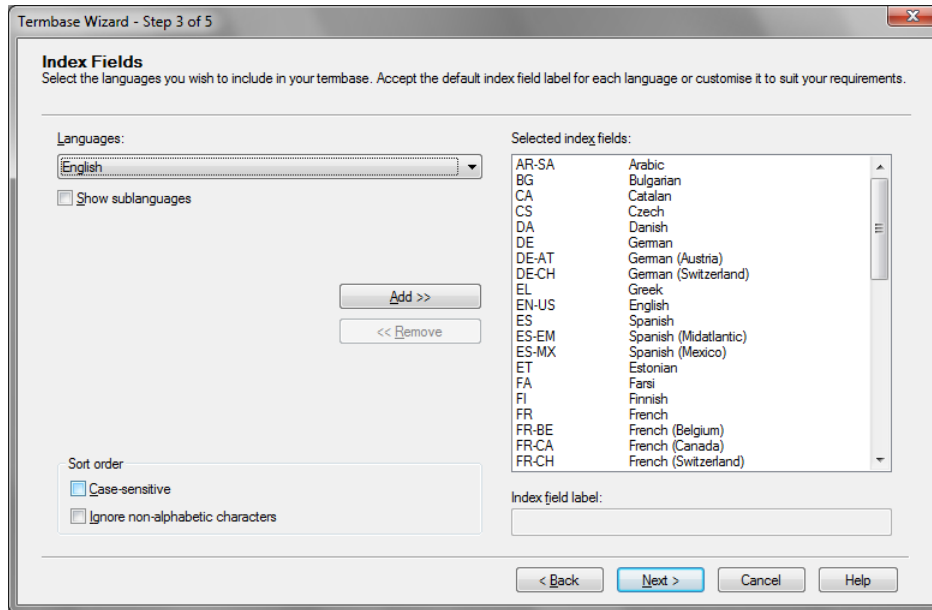
3. The **Termbase Wizard** pops-up, including the different steps of the termbase creation. Click **Next** to start the wizard.
4. On **step 1 of 5**, select '**Load an existing termbase definition file**' option and upload the termbase definition file (.xdt file) provided for this termbase creation.



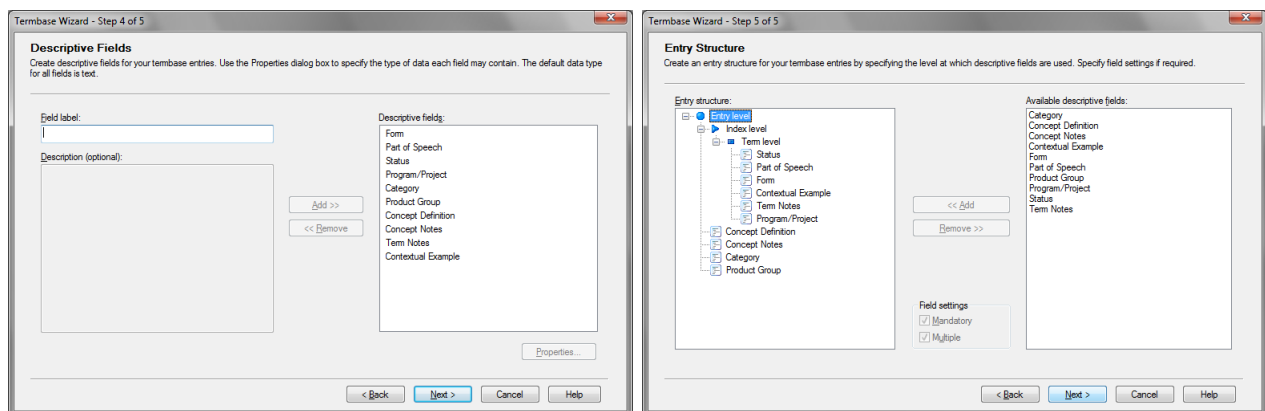
5. On **step 2 of 5**, enter a Friendly Name (and description) for this new TB, this is the name that will then appear on your MultiTerm Desktop interface, and click **Next**:



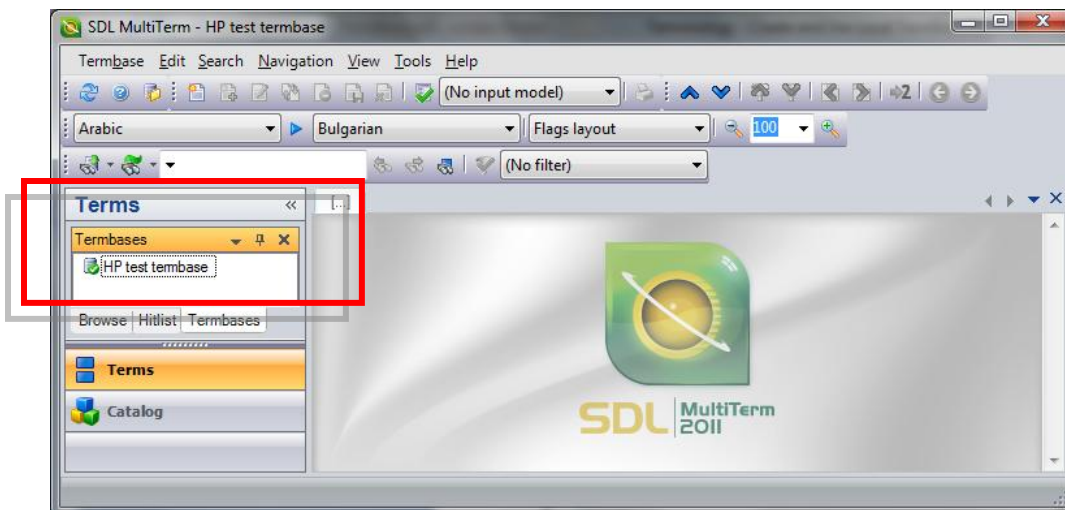
6. On **step 3 of 5**, language data is prefilled with the information provided in the TB definition file (.xdt), just ensure to select “English” on the Language drop-down menu and click **Next**.



7. On **steps 3- 4 of 5**, termbase structure information are also prefilled with the information provided in the TB definition file (.xdt), just click **Next**.



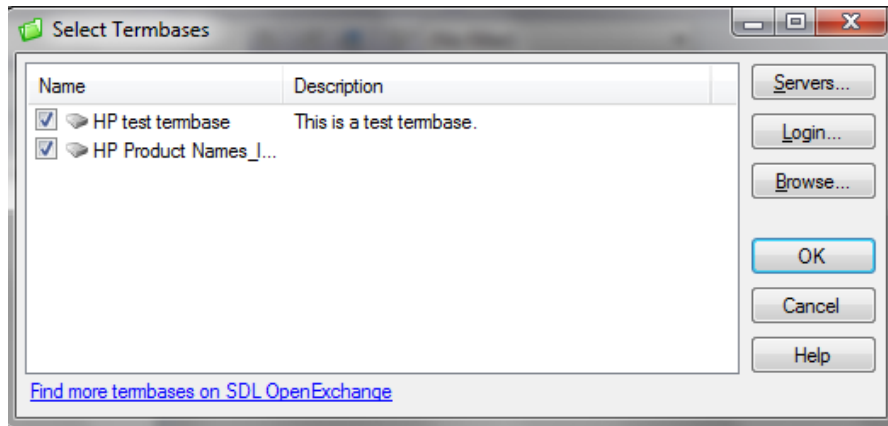
8. On the last pop-up window, click on **Finish**. The new created TB will appear in your Terms tab:



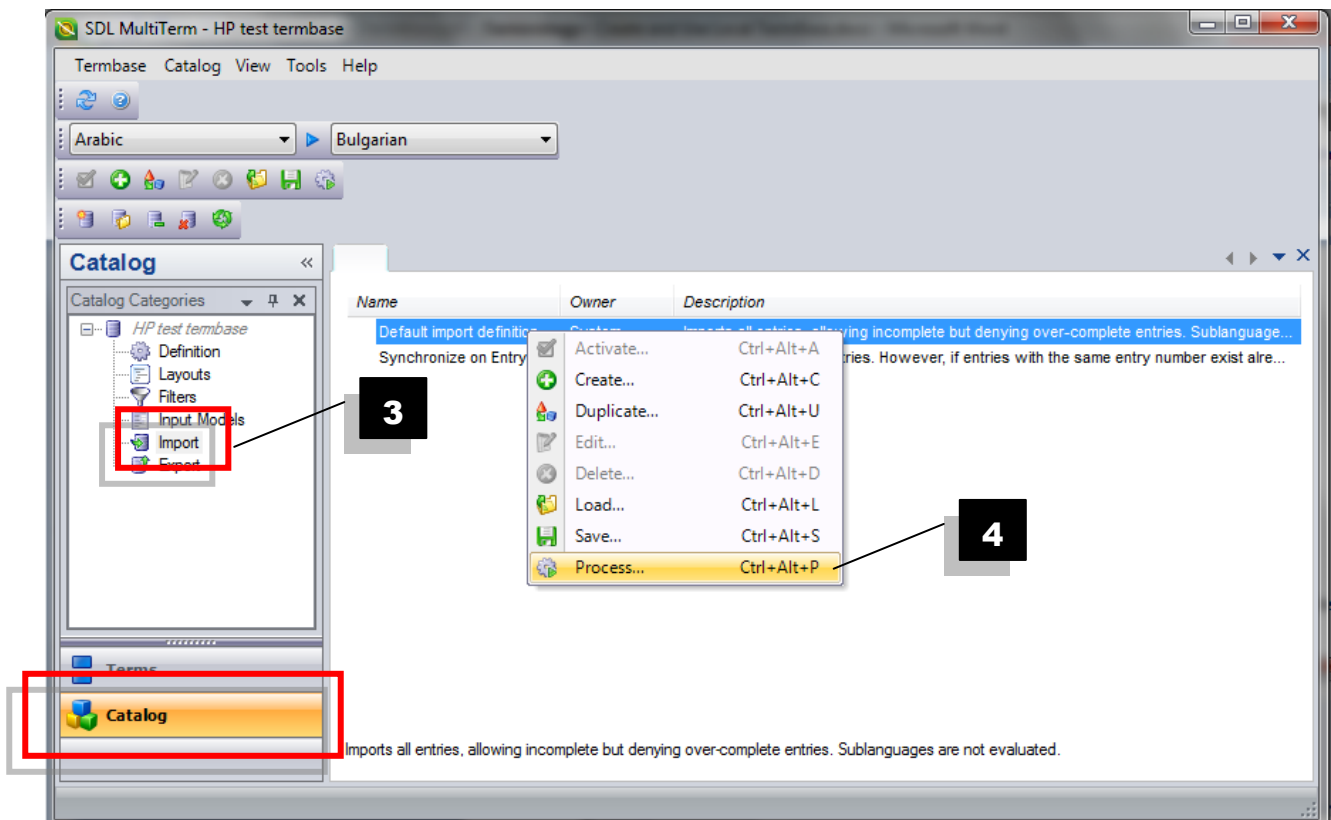
Import New or Updated Content to existing TB

In order to import new terms or update terms to an existing TB, you will need to:

1. Open SDL MultiTerm 2011, and select Termbase > Open Termbase...
2. Select the relevant TB you wish to open and import terms to, and click OK.



3. Click on the **Catalog** tab in SDL MultiTerm Desktop 2009, and select the **Import** menu from the upper **Catalog Categories** selection.



4. In the page body, right-click on **Default import definition** and select the **Process** button.
5. Browse your disk to locate the XML extract from the TB you wish to import and click **Next**.

Import Wizard - Step 2 of 8

General Settings

Click Browse to select the import file (XML) and the import log file below. If you wish to filter the contents of the import file, select a filter from the drop-down list.

Import file:
C:\Users\mmordenti\Desktop\Terminology Work\Business request\HP Global Glossary\02282012\HP Global Glossary.xml Browse...

Log file:
C:\Users\mmordenti\Desktop\Terminology Work\Business request\HP Global Glossary\02282012\HP Global Glossary.log Save As...

☐ Fast import (import file is fully compliant with MultiTerm XML)

☐ Perform full reorganization after import

☐ Apply filter:
Source contains synonyms

< Back Next > Cancel Help

6. Enter name for the **Exclusion file** and only tick "**Allow incomplete entries**", click **Next**.

Import Wizard - Step 3 of 8

Validation Settings

Specify an exclusion file for invalid (incomplete or over-complete) entries and decide how such entries should be processed during the import.

Exclusion file:
C:\Users\mmordenti\Desktop\Terminology Work\Business request\HP Global Glossary\02282012\HP Global Glossary.xcl Save As...

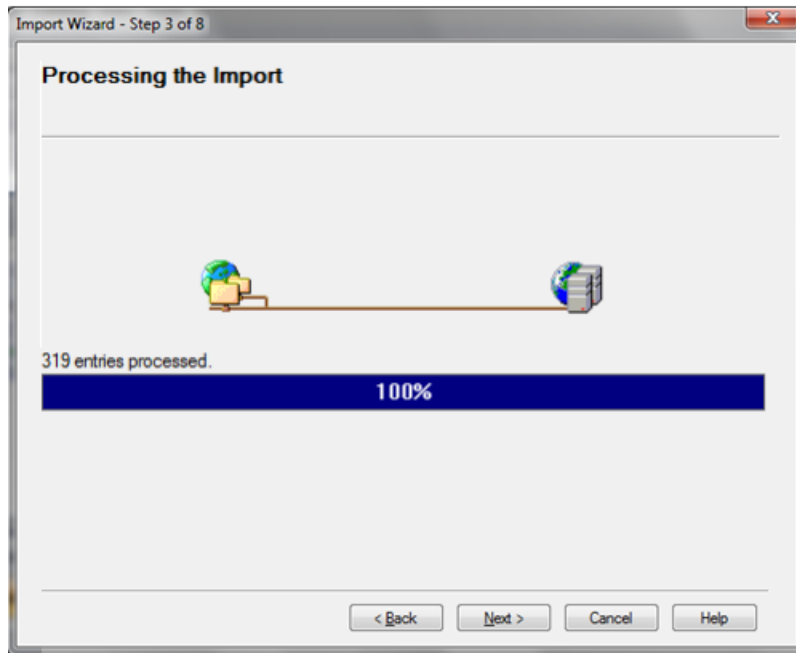
☒ Allow incomplete entries

☐ Allow over-complete entries

☐ Ignore sublanguages

< Back Next > Cancel Help

7. Wait for the import to process (time will depend on the number of entries) and click **Next**.



8. Click on **Finish** to close the **Wizard**, and on **OK** on the remaining pop-up window. Terms have been successfully imported and your local TB is ready for use.

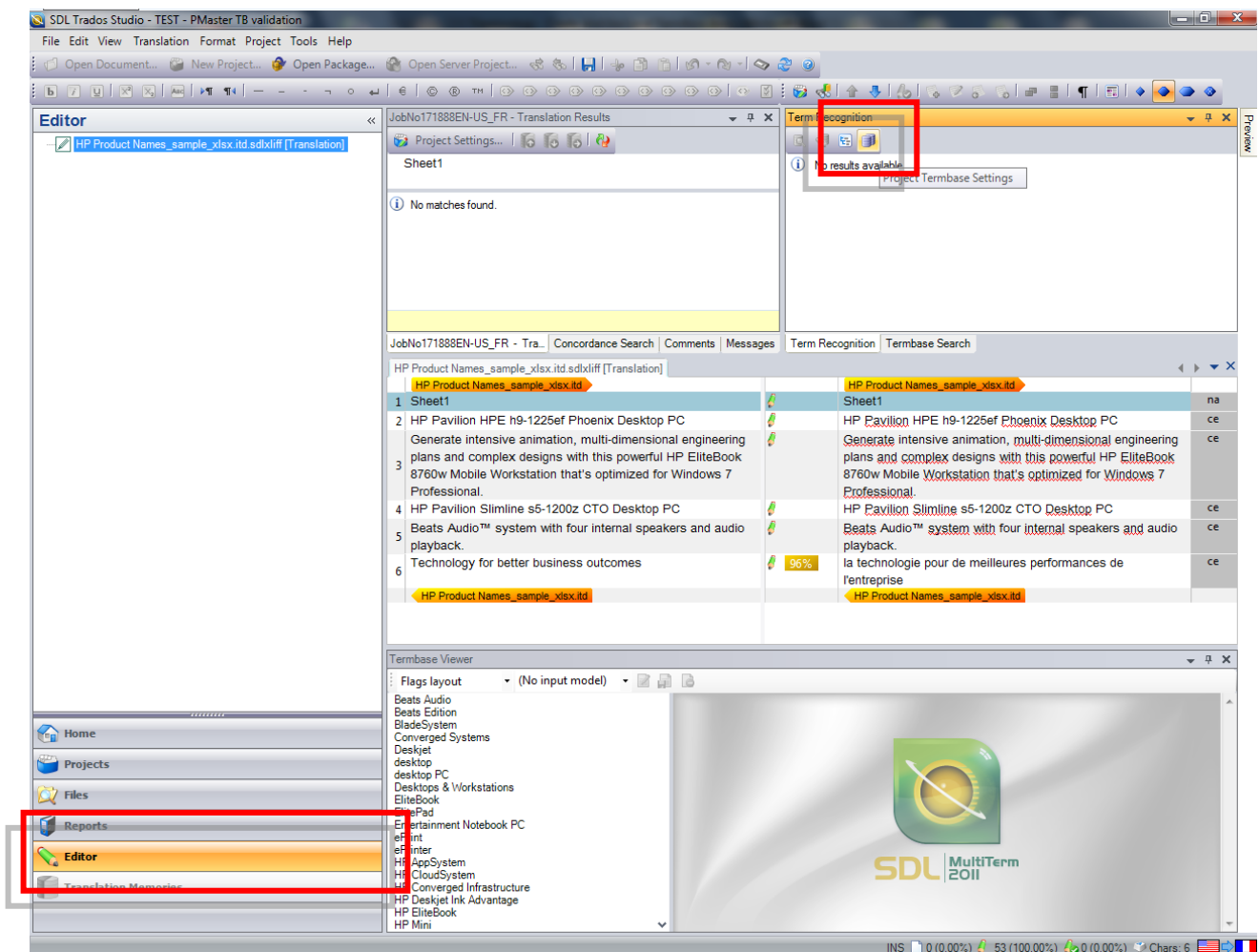
Local Term Base Lookup

Once you have created a local TB on your machine, you will then be able to perform Term Recognition offline when proceeding with your translation work in SDL Studio.

Perform Term Recognition with a Local TB

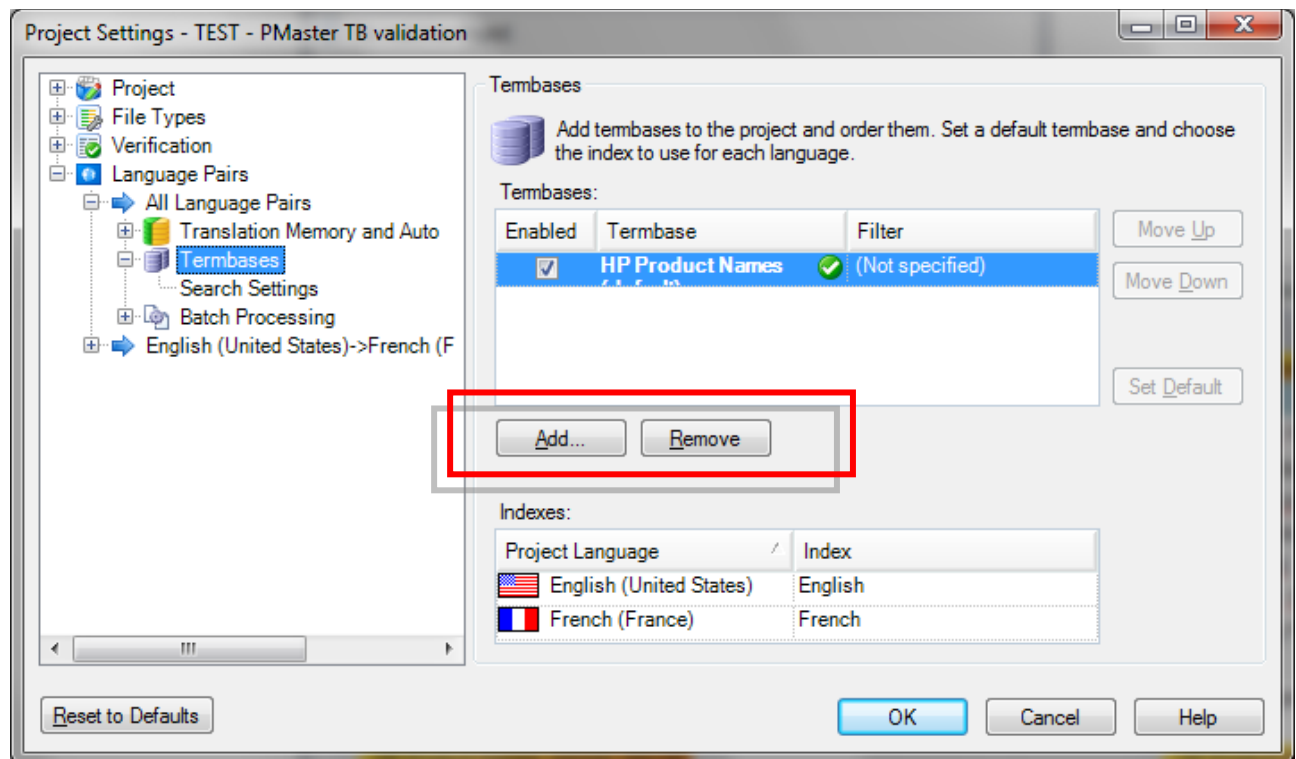
After downloading a TMS Package from ETMA, and registering it in SDL Studio, open the file for translation. To be able to perform Term Recognition on your local termbase, you will need to perform the following steps in SDL Studio under the **Editor** tab:

1. In SDL Studio, go to the **Editor** tab, and in the **Term Recognition** window, click **Project Termbase Settings** button.

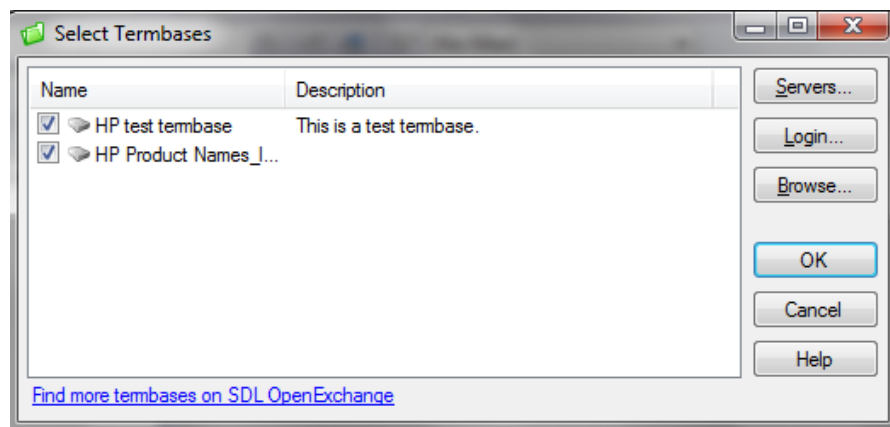


2. On the Project Settings tab, to add your local TB, click on the **Add** button

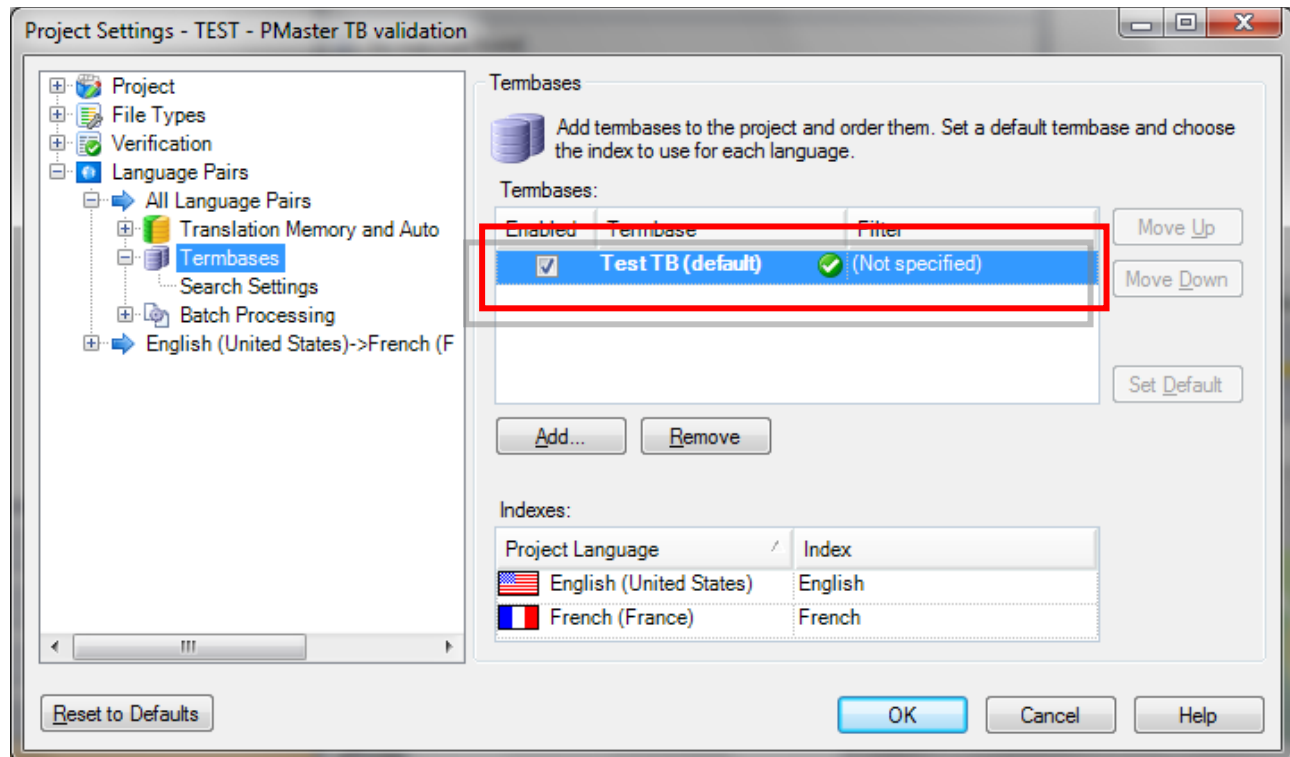
NOTE: If you already have a remote Termbase available on this pop-up window, please ensure to delete this Termbase reference before proceeding, by clicking the Remove button.



- On the **Select Termbase** window, click on **Browse** and select the SDL MultiTerm file from your disk (.sdltb file).
- This will open the local TB you previously created and display it in the **Select Termbases** window. Click the **OK** button.



- Your local TB should now be displayed in the **Termbase Selection** list. Click the **OK** button.



6. When moving from one segment the other in SDL Studio, any term found in the local termbase will be displayed in the **Termbase Recognition** pane.

